



# FOR STARTERS



PCM  
£1,050 PCM

## MAIN COURSE

A beautifully presented two-bedroom first-floor apartment situated in a popular and convenient residential location in Stratford-upon-Avon.

Recently redecorated throughout and fitted with brand-new carpets, this spacious apartment offers bright and comfortable accommodation ready for immediate occupation. The property comprises a welcoming entrance hallway with useful storage, a generous lounge/dining room ideal for both relaxing and entertaining, and a separate fitted kitchen with ample space for dining.

There are two well-proportioned double bedrooms, with the principal bedroom benefiting from built-in storage, along with a spacious bathroom featuring both a bath and separate shower.

Further benefits include a private garage, allocated parking space, and excellent access to local amenities, transport links, and Stratford-upon-Avon's town centre.

Available immediately, this attractive apartment would suit professional tenants, couples, or small families seeking well-maintained accommodation in a desirable location.



# LOCATION

Please see Tenancy Information under the Lettings heading on the toolbar on our website.

## KEY INGREDIENTS



Tenure



Council Tax  
Band - C



EPC  
Band - C



TBC

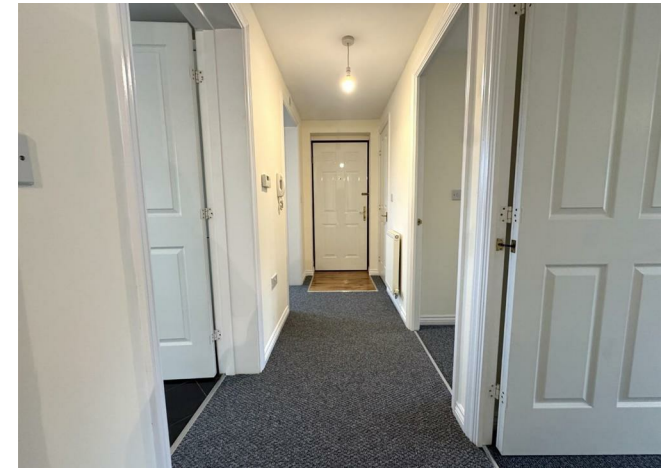


Heating system  
TBC



TBC

WHY NOT TAKE  
A LOOK INSIDE?  
GIVE US A CALL  
01789 414222



**FOR MORE INFO AND  
TO SEE OUR OTHER  
LOVELY PROPERTIES  
CHECK OUT OUR WEBSITE**

**[MOVEWITHEDWARDS.CO.UK](http://MOVEWITHEDWARDS.CO.UK)**

**HAVE YOU GOT  
A PROPERTY  
TO SELL?  
WE'D LOVE TO  
HAVE A CHAT  
01789 414222**

**DID YOU KNOW WE ALSO  
DO MORTGAGES.  
FOR FREE ADVICE  
SPEAK TO  
ONE OF OUR  
CONSULTANTS**

