



# FOR STARTERS



PCM  
£925 PCM

## MAIN COURSE

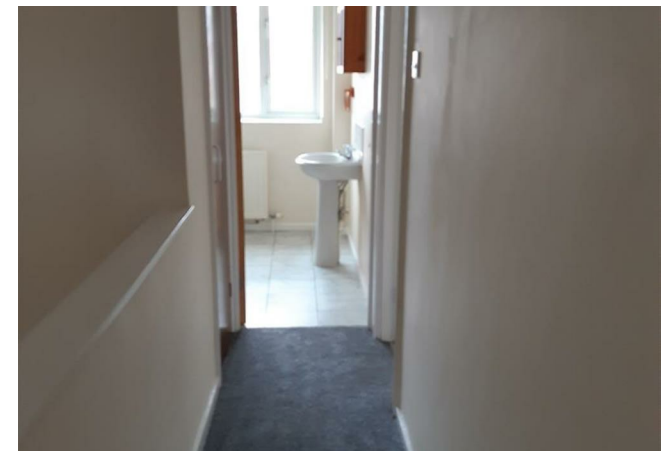
This well-presented unfurnished mid-terraced house is situated in Stratford-upon-Avon and offers comfortable accommodation throughout.

The property features a spacious living room and a fitted kitchen complete with a built-in gas hob, oven, and washing machine. There are two generously sized double bedrooms, both benefiting from built-in wardrobes, along with a bathroom fitted with a shower and a separate WC.

Outside, the property enjoys an enclosed rear patio garden, providing a private outdoor space, as well as a useful garden shed for additional storage.

An ideal home for professionals, couples, or small families seeking convenient living in a desirable location.

No allocated parking, street parking only.



# LOCATION

Please see Tenancy Information under the Lettings heading on the toolbar on our website.



## KEY INGREDIENTS



Tenure



Council Tax  
Band - C



EPC  
Band - C



TBC



Heating system  
TBC



TBC

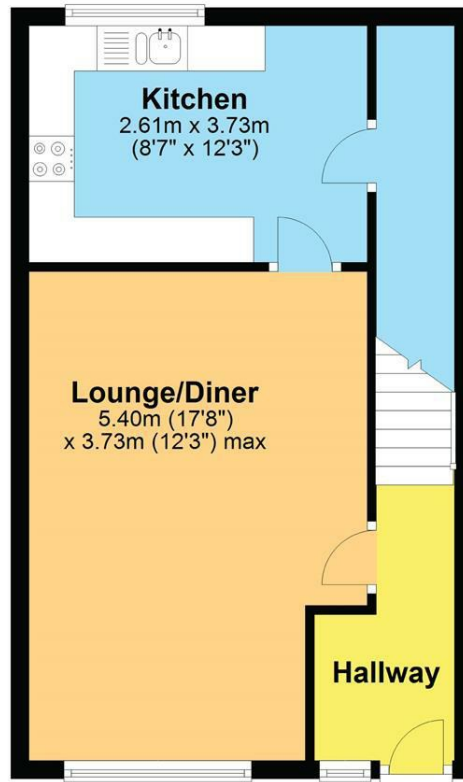
WHY NOT TAKE  
A LOOK INSIDE?  
GIVE US A CALL  
01789 414222





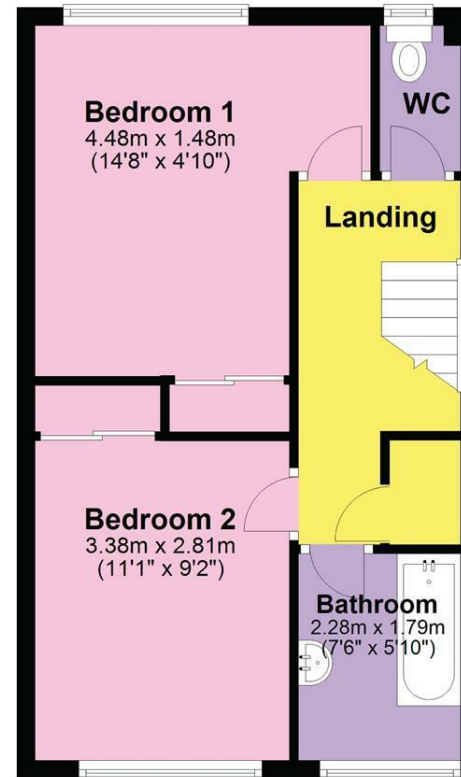
### Ground Floor

Approx. 38.1 sq. metres (409.9 sq. feet)



### First Floor

Approx. 38.1 sq. metres (409.9 sq. feet)



Total area: approx. 76.2 sq. metres (819.8 sq. feet)

DISCLAIMER - Floor plans shown are for general guidance only. Whilst every attempt has been made to ensure that the floorplan measurements are as accurate as possible, they are for illustrative purposes only.

**FOR MORE INFO AND  
TO SEE OUR OTHER  
LOVELY PROPERTIES  
CHECK OUT OUR WEBSITE**

**MOVEWITHEDWARDS.CO.UK**

**HAVE YOU GOT  
A PROPERTY  
TO SELL?  
WE'D LOVE TO  
HAVE A CHAT  
01789 414222**

**DID YOU KNOW WE ALSO  
DO MORTGAGES.  
FOR FREE ADVICE  
SPEAK TO  
ONE OF OUR  
CONSULTANTS**

