



# FOR STARTERS



PER MONTH  
£1,250 Per Month

## MAIN COURSE

This two-bedroom flat has been recently refurbished throughout, making the most of its position within a listed building. Original features – including beams and period detailing – bring plenty of character, while the modern appliances and updates ensure it works well for everyday living.

The living area is a generous, bright space that feels welcoming from the moment you walk in, with plenty of natural light and a sense of openness. The kitchen has been updated in a clean, modern style, offering all the essentials without taking away from the building's heritage.

There are two double bedrooms. The main bedroom is notably spacious, offering a comfortable layout. The second bedroom is another good double and includes a feature staircase, adding an interesting architectural touch. There is also a useful additional storage area.

The bathroom is modern and well-finished, fitted with a shower cubicle.

Outside, the property benefits from off-road parking behind an electric gate, giving added security and peace of mind.

Available from 22nd of August



# LOCATION

Please see Tenancy Information under the Lettings heading on the toolbar on our website.

## KEY INGREDIENTS



Tenure



Council Tax Band - New



EPC Band -



TBC

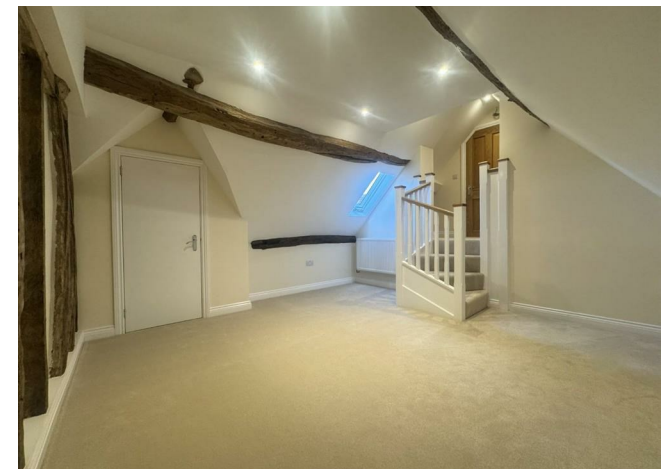


Heating system TBC



TBC

WHY NOT TAKE  
A LOOK INSIDE?  
GIVE US A CALL  
01789 414222



**FOR MORE INFO AND  
TO SEE OUR OTHER  
LOVELY PROPERTIES  
CHECK OUT OUR WEBSITE**

**MOVEWITHEDWARDS.CO.UK**

**HAVE YOU GOT  
A PROPERTY  
TO SELL?  
WE'D LOVE TO  
HAVE A CHAT  
01789 414222**

**DID YOU KNOW WE ALSO  
DO MORTGAGES.  
FOR FREE ADVICE  
SPEAK TO  
ONE OF OUR  
CONSULTANTS**

