



FOR STARTERS



PER MONTH
£2,250 Per Month

MAIN COURSE

A beautifully presented three-storey end-of-terrace townhouse, set within an exclusive architect-designed development of just eleven homes, moments from the heart of Stratford-upon-Avon. Offering generous proportions, high ceilings, and premium finishes throughout, this contemporary home is ideal for modern living.

The ground floor features a bright entrance hall, a stylish WC, and a stunning open-plan kitchen/dining space with high-spec fittings, integrated appliances, and excellent natural light. To the rear, a spacious separate living room opens via floor-to-ceiling sliding doors onto a private west-facing terrace—perfect for relaxing or entertaining.

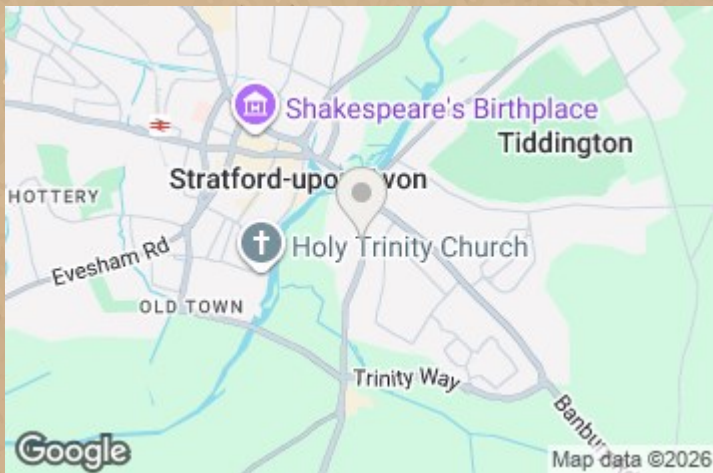
The first floor offers two well-proportioned double bedrooms, both with sleek en suite shower rooms, while the top floor is dedicated to an impressive principal suite with a luxurious bathroom including a freestanding bath and walk-in shower.

Further benefits include secure gated parking, landscaped communal gardens, and a superb location within walking distance of Stratford's restaurants, shops, river walks, and transport links. Offered with no chain.

Available now!
Pets Considered



LOCATION



KEY INGREDIENTS



Tenure



Council Tax
Band - F



EPC
Band - B



West facing



Mains Electrics

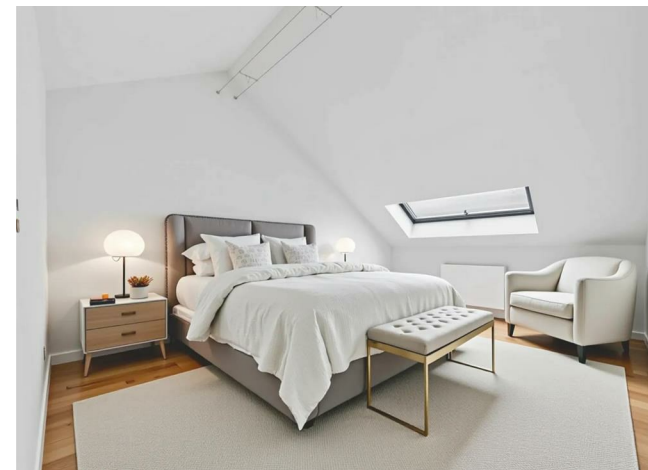
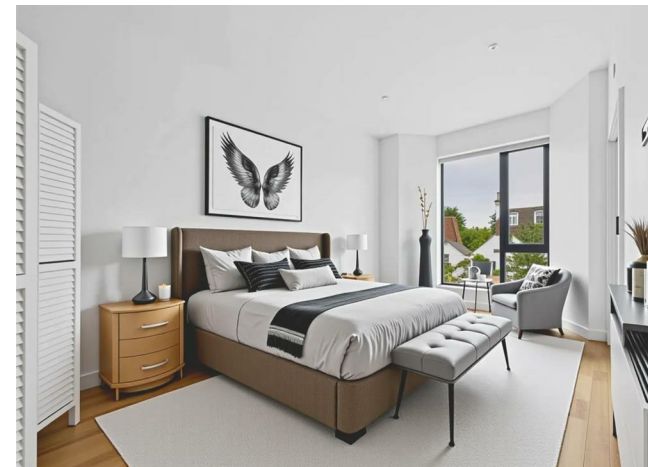
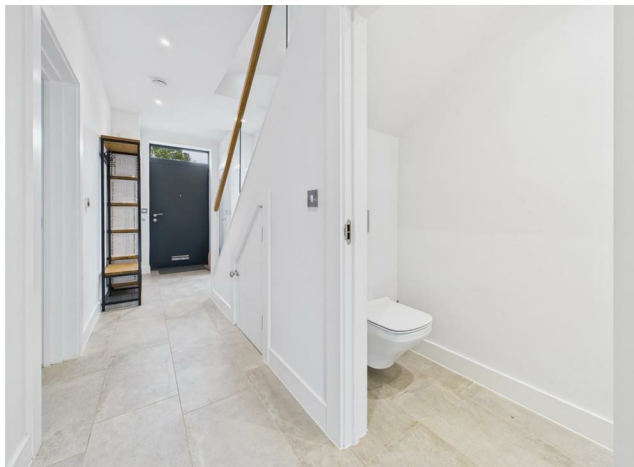


Heating system
Gas central



Stratford-Upon-Avon
Primary
School

WHY NOT TAKE
A LOOK INSIDE?
GIVE US A CALL
01789 414222





APPROXIMATE GROSS INTERNAL FLOOR AREA:
146.2 sq m (1,574 sq ft)

Shipston Road
Stratford upon Avon

This plan is for guidance only and must not be relied upon as a statement of fact. Attention is drawn to the Important Notice on the last page of text of the Particulars.

FOR MORE INFO AND TO SEE OUR OTHER LOVELY PROPERTIES CHECK OUT OUR WEBSITE

MOVEWITHEDWARDS.CO.UK

HAVE YOU GOT A PROPERTY TO SELL? WE'D LOVE TO HAVE A CHAT 01789 414222

DID YOU KNOW WE ALSO DO MORTGAGES. FOR FREE ADVICE SPEAK TO ONE OF OUR CONSULTANTS

