



FOR STARTERS



ASKING PRICE
£275,000

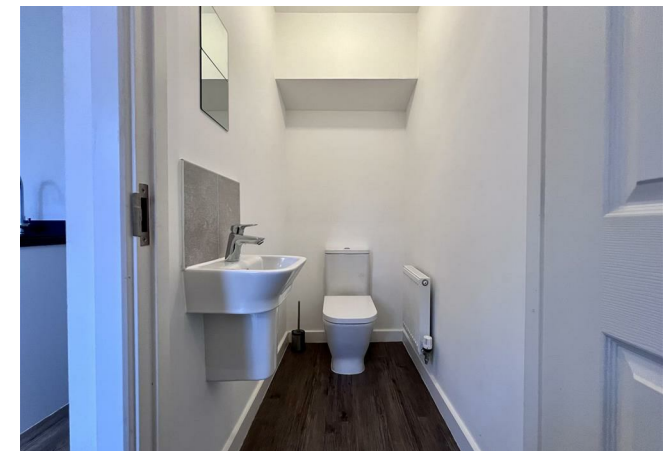
MAIN COURSE

Located on the sought-after Jacksons Meadow development in Bidford-on-Avon, this beautifully presented two double bedroom semi-detached home is offered to the market with no onward chain and is ready to move straight into. Positioned on a smaller, modern development with lovely countryside views to the rear, and within walking distance of the ever-popular Broom Hall Inn, this property truly suits a wide range of buyers – whether you're a first-time buyer, downsizing, or looking for a smart investment.

To the front, the property benefits from a driveway providing parking for two vehicles, a large single garage, and gated side access leading to the rear garden. Internally, you are welcomed by a separate entrance hallway with stairs rising to the first floor. To the right sits a generous living room, beautifully bright thanks to a large front-facing window, and complemented by a spacious under-stairs storage cupboard.

The living room flows seamlessly into a modern and contemporary kitchen dining room, fitted with a range of base and wall units and offering ample space for dining. French doors open directly onto the rear garden, creating a wonderful indoor-outdoor feel. A real bonus to this home is the cleverly tucked-away utility area along with a convenient downstairs WC.

Upstairs, the property continues to impress with two spacious double bedrooms. The principal bedroom enjoys attractive countryside views



to the rear and benefits from an ensuite shower room. The second double bedroom features a built-in cupboard for added storage. The main bathroom is finished in a modern, contemporary style.

Externally, the rear garden is a fantastic size for the property – private and well enclosed, with a patio area and lawn providing plenty of space for children, pets, or simply relaxing in the sunshine.

Early viewing is highly recommended – come and see all this superb home has to offer.



KEY INGREDIENTS



Tenure
Freehold



Council Tax
Band - B



EPC
Band - B



East Facing



Mains Gas, Electric,
Water, Drainage



Gas Central Heating



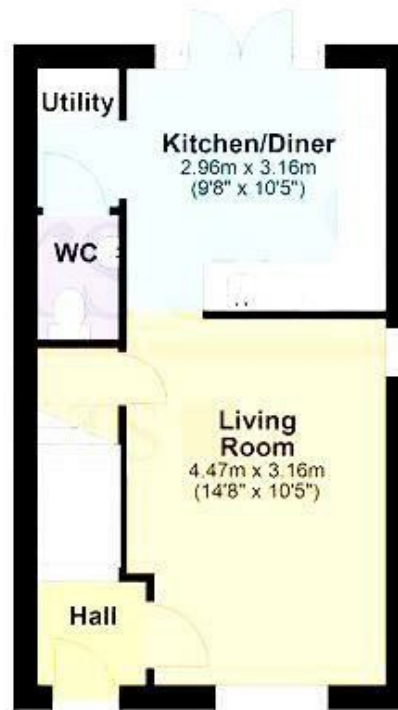
Bidford Primary

WHY NOT TAKE
A LOOK INSIDE?
GIVE US A CALL
01789 414222



Ground Floor

Approx. 50.5 sq. metres (544.0 sq. feet)



First Floor

Approx. 32.0 sq. metres (344.4 sq. feet)



Total area: approx. 82.5 sq. metres (888.4 sq. feet)

© 2014 EATON. All rights reserved. See the general disclaimer on the Eaton website for more information. Eaton is a registered trademark of Eaton Corporation. Eaton is not responsible for any errors or omissions in this document. Eaton is not responsible for any damage or loss of data or information resulting from the use of this document.

**FOR MORE INFO AND
TO SEE OUR OTHER
LOVELY PROPERTIES
CHECK OUT OUR WEBSITE**

MOVEWITHEDWARDS.CO.UK

**HAVE YOU GOT
A PROPERTY
TO SELL?
WE'D LOVE TO
HAVE A CHAT
01789 414222**

**DID YOU KNOW WE ALSO
DO MORTGAGES.
FOR FREE ADVICE
SPEAK TO
ONE OF OUR
CONSULTANTS**

