





# FOR STARTERS



PER MONTH  
£1,050 Per Month

## MAIN COURSE

This is a charming two bedroom terraced house at the end of the cul-de-sac.

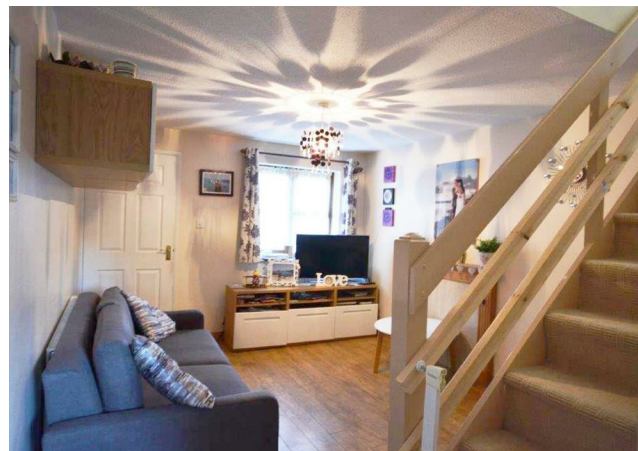
Through the front door there is a small internal porch with space for coats and shoes. The sitting room is a good size with a feature fireplace, laminate oak effect floor and window looking out on to the greenery in front of the house. The kitchen runs across the back of the house and has plenty of cupboards and work space, with electric hob and oven. There is also a free standing fridge freezer and a fold down dining table and chairs. Double doors lead on to the garden which has a large patio, shrub borders around the perimeter and plenty of lawn.

The stairs rise from the sitting room with bathroom at the top which has a white suite with shower over bath. The master bedroom is a good size with storage cupboard. The second bedroom is a small double.

There is a single garage plus parking for one car.

Available start of February.

Sorry no pets.





# LOCATION

Please see Tenancy Information under the Lettings heading on the toolbar on our website.

## KEY INGREDIENTS



Tenure



Council Tax  
Band - C



EPC  
Band - D



TBC



Heating system  
TBC



TBC

WHY NOT TAKE  
A LOOK INSIDE?  
GIVE US A CALL  
01789 414222





**FOR MORE INFO AND  
TO SEE OUR OTHER  
LOVELY PROPERTIES  
CHECK OUT OUR WEBSITE**

**MOVEWITHEDWARDS.CO.UK**

**HAVE YOU GOT  
A PROPERTY  
TO SELL?  
WE'D LOVE TO  
HAVE A CHAT  
01789 414222**

**DID YOU KNOW WE ALSO  
DO MORTGAGES.  
FOR FREE ADVICE  
SPEAK TO  
ONE OF OUR  
CONSULTANTS**

