



FOR STARTERS



PCM
£1,250 PCM

MAIN COURSE

*****Free superfast fibre broadband included***** This two bedroom first floor apartment is situated within easy walking distance of the centre of Stratford-upon Avon. The zero deposit scheme is available on request and pets are considered. The apartment comprises of Kitchen/living/dining room with Bosch appliances, master bedroom with en suite, shower room, utility cupboard with washer/drier and an allocated parking space.

Priority for key workers

Available 12th of September.

Fordham House has been awarded a gold standard award in recognition of the security measures incorporated into the building design.

The Fordham House Points of difference are:

Free superfast 150mb fibreoptic broadband included

Pets considered

On site caretaker

Remote door entry

Smart boxes in reception for secure receipt of online goods

High spec appliances

High EPC rating

Remote Wi-Fi heating

Easy maintenance bathrooms

Integral blinds (blackout in bedrooms)

Bespoke digital application for contact/helpful info

Stone worktops

Solid doors throughout

Tiled flooring

Exceptional noise insulation

Water Leak detection

Outside is a well thought out landscaped communal area with cctv, green wall features, planters, bike store, floor level lighting with pir entry to communal areas and a high specification finish to communal areas. All of which create an upmarket feel to this smart complex. Priority for key workers.



LOCATION

Please see Tenancy Information under the Lettings heading on the toolbar on our website.

KEY INGREDIENTS



Tenure



Council Tax
Band - C



EPC
Band - B



TBC

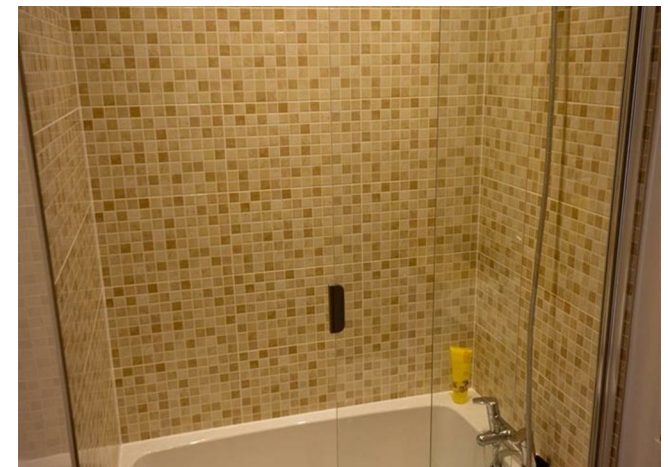
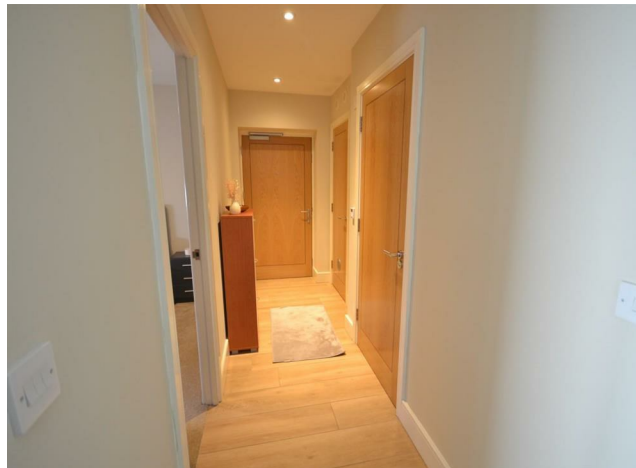


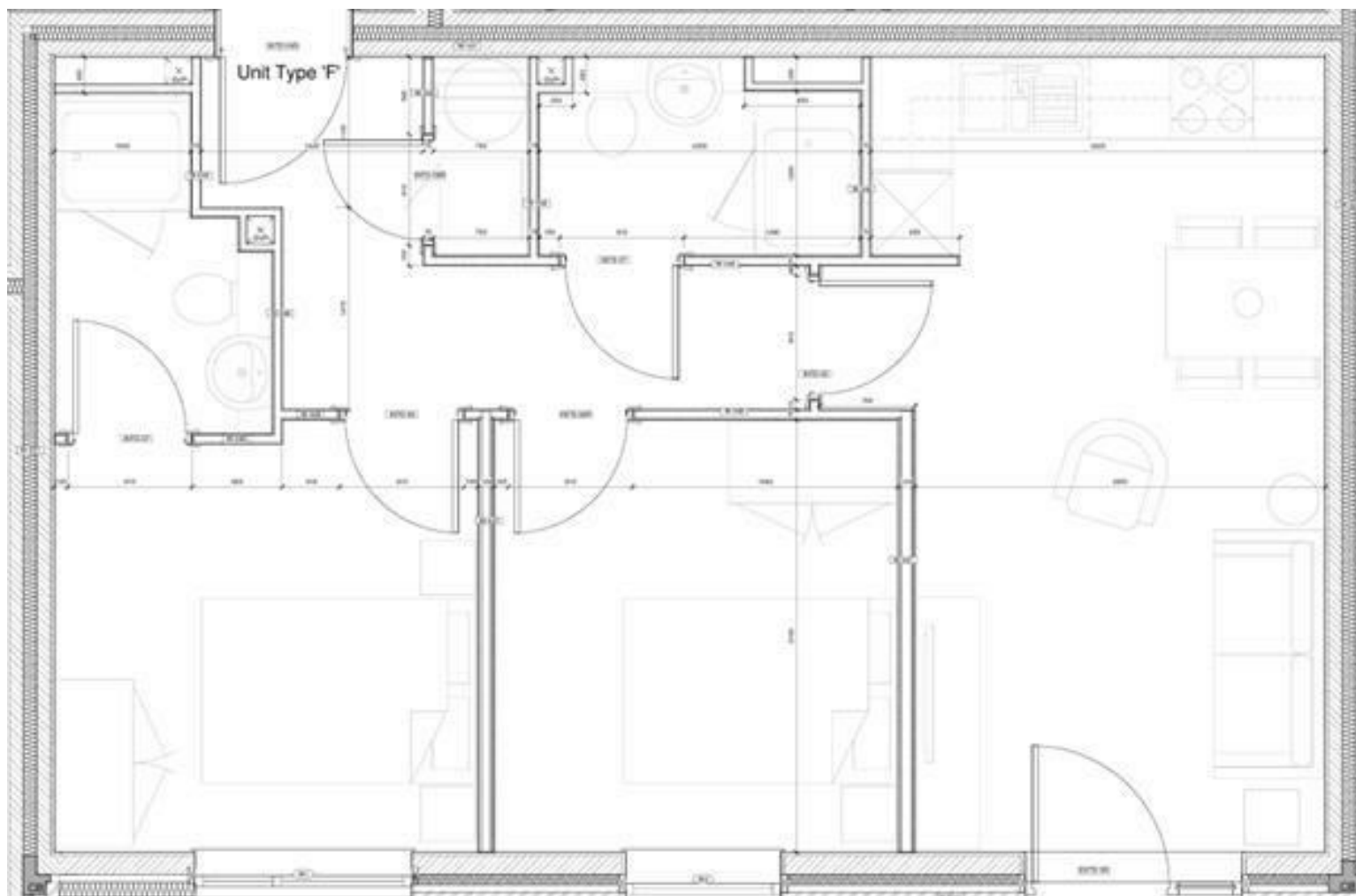
Heating system
TBC



TBC

WHY NOT TAKE
A LOOK INSIDE?
GIVE US A CALL
01789 414222





**FOR MORE INFO AND
TO SEE OUR OTHER
LOVELY PROPERTIES
CHECK OUT OUR WEBSITE**

MOVEWITHEDWARDS.CO.UK

**HAVE YOU GOT
A PROPERTY
TO SELL?
WE'D LOVE TO
HAVE A CHAT
01789 414222**

**DID YOU KNOW WE ALSO
DO MORTGAGES.
FOR FREE ADVICE
SPEAK TO
ONE OF OUR
CONSULTANTS**

