



FOR STARTERS



ASKING PRICE
£875,000

MAIN COURSE

Have you been on the hunt for that elusive home that truly has it all - character, space, style and that ever-so-rare touch of the extraordinary? Do you long for a generous garden sanctuary, yet want to be just moments from the town centre? Then this utterly stunning four-bedroom home could be the one you've been waiting for.

From the moment you step inside, it's clear this is no ordinary property. Thoughtfully extended and meticulously upgraded by the current owner, every inch of this home has been crafted with care, creating a seamless blend of period charm and modern sophistication.

As you enter the hallway, the warmth and character of this home wraps around you. To the front, a classic reception room with a bay window and working fire provides the perfect spot to curl up with a book or host guests in style. The second reception room is equally inviting - a cosy, intimate space complete with a gorgeous log burner, ideal for those chilled winter evenings.

Move through the hallway and you'll find one of the true showpieces of the home - an absolutely sensational open-plan kitchen, living and dining space that stretches across the rear of the property. With huge bi-fold doors framing the view, this room is awash with natural light and effortlessly brings the outside in. Whether you're hosting a dinner party, enjoying lazy Sunday brunches, or keeping an eye on the kids while you cook, this is a space that works for every occasion.

The kitchen itself is sleek and sophisticated, complete with integrated appliances and a central island perfect for casual dining or evening drinks. There's ample room for a large dining table and comfy seating area, making this a genuine 'hub of the home'.

Off the kitchen, you'll also find a separate utility room and a downstairs loo, practical additions that keep the main living space calm and clutter-free. Plus, there's access to a useful cellar - ideal for storage, a wine room or future potential.



Upstairs, there are four double bedrooms, each beautifully presented and filled with natural light. The pièce de résistance is the master suite – an indulgent retreat featuring a soaring vaulted ceiling and a luxurious en-suite bathroom.

The main bathroom doesn't disappoint either. Designed with relaxation in mind, it features a walk-in drencher shower, freestanding bath, and high-end finishes that feel straight out of a boutique hotel.

And just when you think this home couldn't surprise you any further, step outside into a garden that defies expectations for a property so close to town. It's a truly exceptional space – large, private and West Facing. There's a raised and spacious patio for al fresco dining, a great sized lawn area with planted borders, a charming summer house, an aviary, and even gated rear access. Whether you're entertaining, playing, or simply enjoying the peace, this garden offers a rare oasis just a short walk from everything.

This isn't just a house – it's a lifestyle, and it's waiting for its next chapter.



KEY INGREDIENTS



Tenure
Freehold



Council Tax
Band - E



EPC
Band - D



West Facing Garden



Mains Services
Gas, Electric, Water &
Drainage

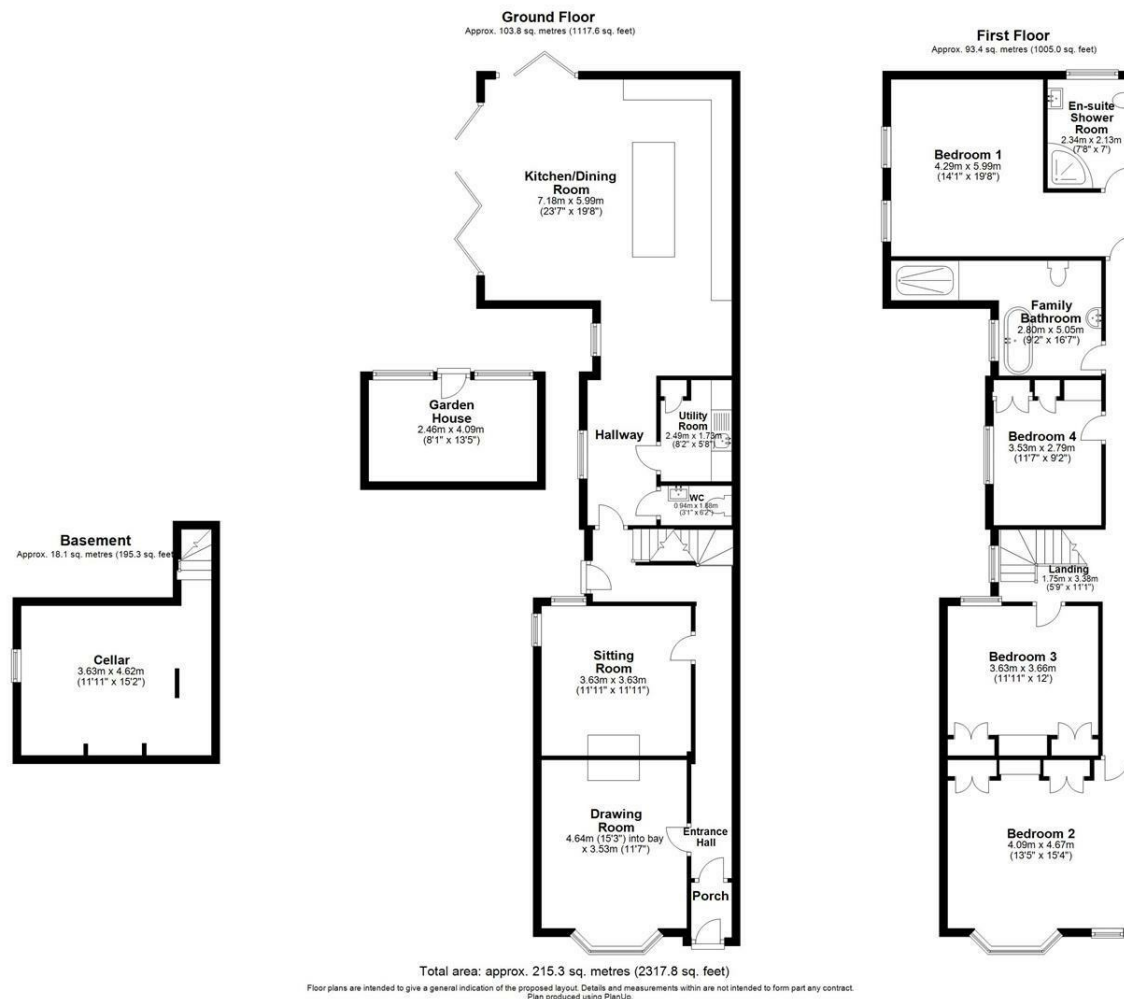


Heating System
Gas Central Heating



St Gregorys Primary
School

WHY NOT TAKE
A LOOK INSIDE?
GIVE US A CALL
01789 414222



**FOR MORE INFO AND
TO SEE OUR OTHER
LOVELY PROPERTIES
CHECK OUT OUR WEBSITE**

MOVEWITHEDWARDS.CO.UK

**HAVE YOU GOT
A PROPERTY
TO SELL?
WE'D LOVE TO
HAVE A CHAT
01789 414222**

**DID YOU KNOW WE ALSO
DO MORTGAGES.
FOR FREE ADVICE
SPEAK TO
ONE OF OUR
CONSULTANTS**

