



FOR STARTERS



OFFERS IN EXCESS OF
£320,000

MAIN COURSE

****Well-Proportioned 3-Bedroom Terraced Home in Popular South Green Drive Location****

Located in a highly sought-after area on South Green Drive, this 3-bedroom terraced property offers generous living space and excellent potential in a spot where homes are snapped up quickly. To the front, there is off-road parking for two vehicles, with the home set slightly elevated from the road. Step into a practical entrance porch, ideal for storing shoes, coats, and pushchairs—before entering a central hallway with stairs directly ahead.

To the left is a spacious living room with a large window bringing in plenty of natural light and views to the front. At the rear, the modern kitchen/dining room provides a good amount of space for a family dining table, and a large rear window looks out over the garden. Off the kitchen is a useful side lean-to, perfect for storing bikes or general items, with an additional utility area at the back.

Upstairs, there are three well-sized bedrooms. Both double bedrooms are generous enough to be used as the main bedroom, while the third is a comfortable single. The modern bathroom is finished with stylish grey tiling and features a shower over the bath. A standout feature is the large loft space, accessed via a pull-down ladder. With excellent head height, a fitted skylight window, and plenty of space, it offers fantastic potential for conversion, whether as an additional bedroom, home office, or hobby room (subject to the necessary



approvals).

The private, west-facing garden is a great size for the property—fully enclosed and currently laid out as a child-friendly space, though easily adaptable to suit different needs.

This is a solid, well-maintained home in a fantastic location with strong appeal for families, first-time buyers, or investors. Early viewing is strongly advised, as properties on this street rarely stay available for long.



KEY INGREDIENTS



Tenure
Freehold



Council Tax
Band - C



EPC
Band - TBC



West Facing



Mains Gas, Electric,
Water, Drainage

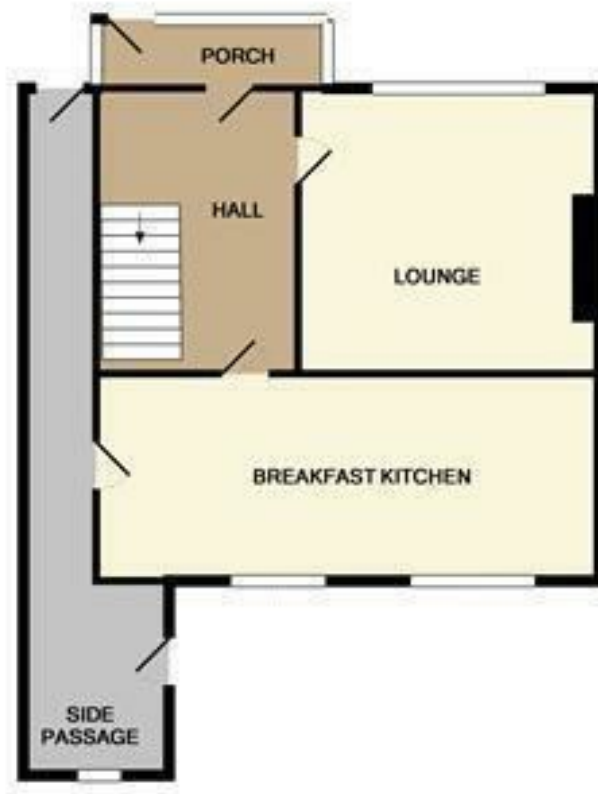


Gas Central Heating



Stratford High

WHY NOT TAKE
A LOOK INSIDE?
GIVE US A CALL
01789 414222



GROUND FLOOR



1ST FLOOR

Measurements are approximate. Not to scale. Illustrative purposes only.
Made with Metropix, ©2015

**FOR MORE INFO AND
TO SEE OUR OTHER
LOVELY PROPERTIES
CHECK OUT OUR WEBSITE**

MOVEWITHEDWARDS.CO.UK

**HAVE YOU GOT
A PROPERTY
TO SELL?
WE'D LOVE TO
HAVE A CHAT
01789 414222**

**DID YOU KNOW WE ALSO
DO MORTGAGES.
FOR FREE ADVICE
SPEAK TO
ONE OF OUR
CONSULTANTS**

