





# FOR STARTERS



OFFERS IN EXCESS OF  
£440,000

## MAIN COURSE

Nestled in the heart of ever-popular Tiddington, this beautifully presented semi-detached home offers the best of village living within easy reach of Stratford-upon-Avon. A smart open porch ushers you into a chic entrance hall dressed in soothing tones and laid with Karndean flooring that runs seamlessly throughout the ground floor. To the right, a bay-fronted sitting room pairs contemporary décor with period character, featuring an electric stove framed by bespoke cabinetry and shelving—perfect for cosy evenings in.

To the rear of the house, the open-plan kitchen and dining room is tailor-made for modern life. A breakfast bar invites casual coffees, while sleek integrated appliances and expansive bi-fold doors blur the line between inside and out, spilling onto a sun-drenched terrace ideal for summer entertaining. Upstairs, two generous double bedrooms and a versatile single are served by a recently refitted four-piece bathroom





boasting a walk-in rainfall shower and separate bath. Bedroom one enjoys a bay window and fitted wardrobes, creating a restful retreat.

Outside, the raised terrace, edged by a handsome retaining wall, steps down to a lawned garden bordered by established planting—an inviting backdrop for children’s play or al-fresco dining. A driveway at the front comfortably accommodates several vehicles, completing this superb family home.

KEY INGREDIENTS



Tenure  
Freehold



Council Tax  
Band - D



EPC  
Band - D



North/East



All Mains Services  
are connected



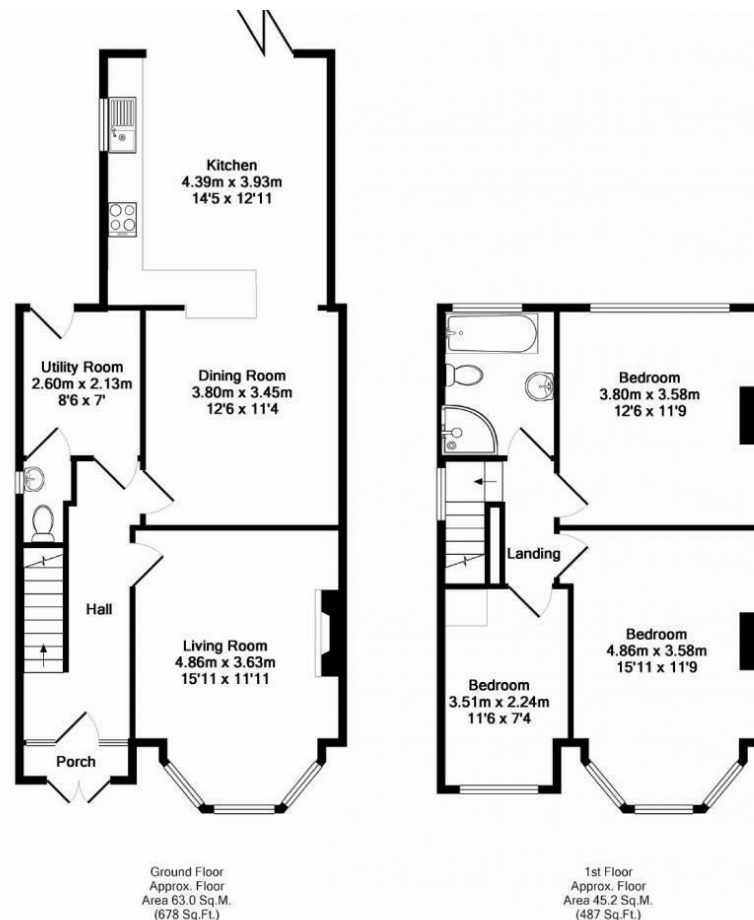
Heating System  
Mains Gas



Alveston Primary  
School

WHY NOT TAKE  
A LOOK INSIDE?  
GIVE US A CALL  
01789 414222





Whilst every attempt has been made to ensure the accuracy of the floor plan contained here, measurements of doors, windows, rooms and any other items are approximate and no responsibility is taken for any error, omission, or mis-statement. This plan is for illustrative purposes only and should be used as such by any prospective purchaser. The services, systems and appliances shown have not been tested and no guarantee as to their operability or efficiency can be given  
 Made with Metropix ©2011

**FOR MORE INFO AND  
 TO SEE OUR OTHER  
 LOVELY PROPERTIES  
 CHECK OUT OUR WEBSITE**

**MOVEWITHEDWARDS.CO.UK**

**HAVE YOU GOT  
 A PROPERTY  
 TO SELL?  
 WE'D LOVE TO  
 HAVE A CHAT  
 01789 414222**

**DID YOU KNOW WE ALSO  
 DO MORTGAGES.  
 FOR FREE ADVICE  
 SPEAK TO  
 ONE OF OUR  
 CONSULTANTS**

