



FOR STARTERS



PCM
£2,450 PCM

MAIN COURSE

An immaculate detached property situated south of the river in Stratford-upon-Avon.

The property comprises of an entrance hall with stairs off to the first floor and cloakroom, doors leading to the lounge and kitchen which follow through to a large conservatory, as well as to the dining room. The kitchen comes with integrated dishwasher, fridge/freezer, gas hob and double electric oven, where a separate utility room can be found which has plumbing for a washing machine and tumble dryer and access to the garden.

Upstairs, the hallway leads to the master bedroom with dressing room and en-suite shower room, two other double bedrooms with fitted wardrobes and one with en-suite and a further good size single bedroom. There is also a family bathroom with a separate cubicle shower.

Externally, the property benefits from a double garage with a tarmac driveway for parking for at least two cars. To the rear of the property is an enclosed garden laid mainly to lawn with a patio area and side access to the front of the property.

Viewing is highly recommended. Available from the 4th of August. Sorry, no pets or smokers.



LOCATION

Please see Tenancy Information under the Lettings heading on the toolbar on our website.

KEY INGREDIENTS



Tenure



Council Tax
Band - G



EPC
Band - B



TBC



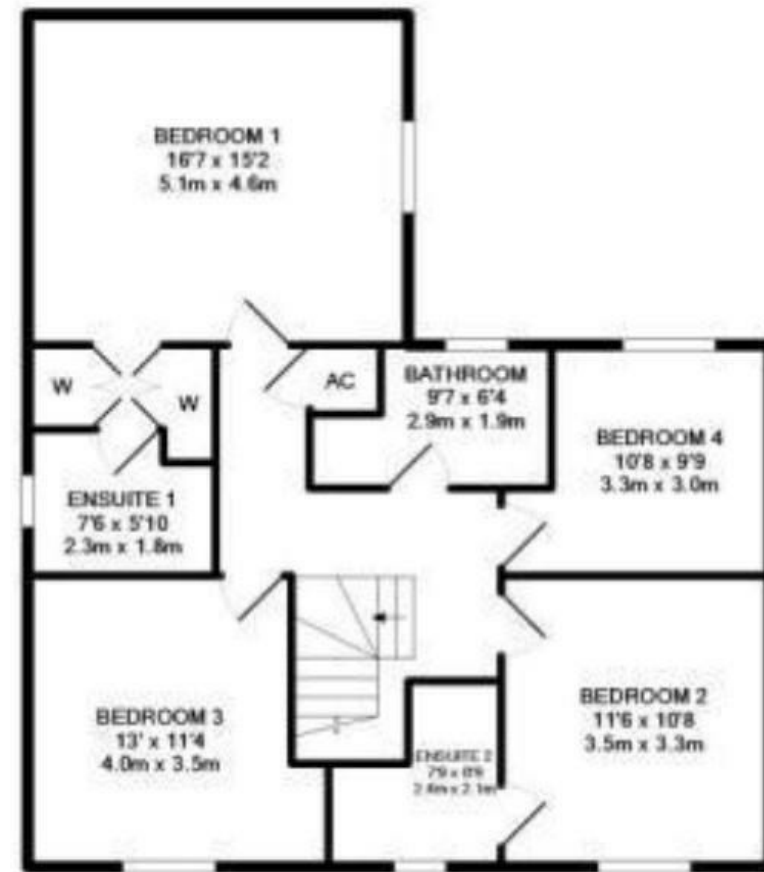
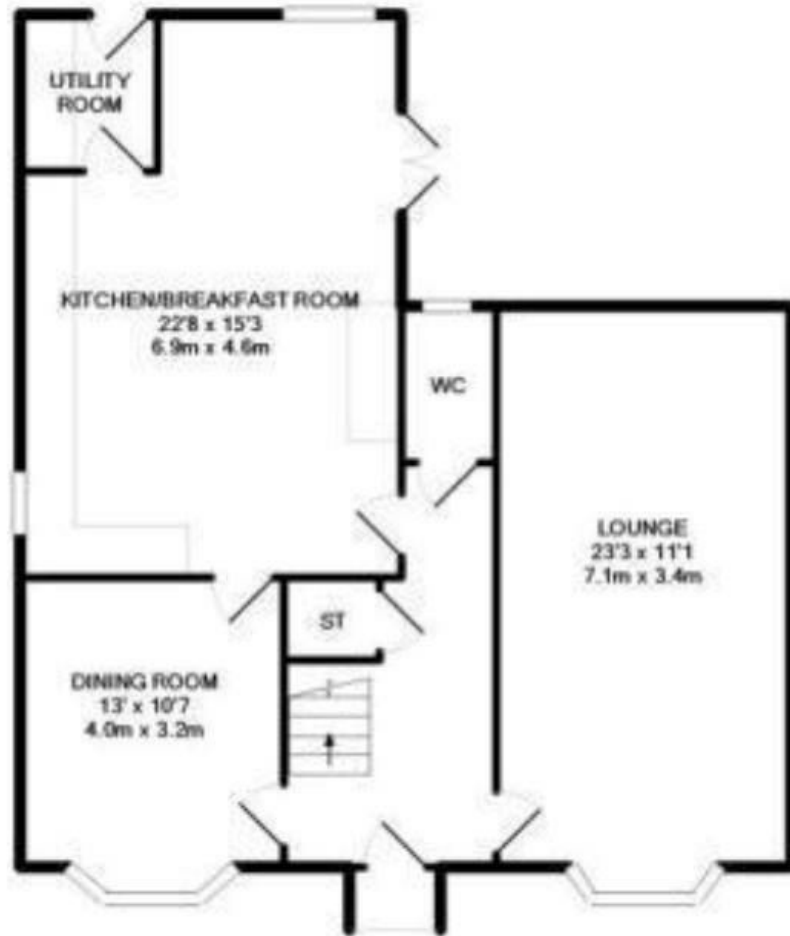
Heating system
TBC



TBC

WHY NOT TAKE
A LOOK INSIDE?
GIVE US A CALL
01789 414222





FIRST FLOOR

**FOR MORE INFO AND
TO SEE OUR OTHER
LOVELY PROPERTIES
CHECK OUT OUR WEBSITE**

MOVEWITHEDWARDS.CO.UK

**HAVE YOU GOT
A PROPERTY
TO SELL?
WE'D LOVE TO
HAVE A CHAT
01789 414222**

**DID YOU KNOW WE ALSO
DO MORTGAGES.
FOR FREE ADVICE
SPEAK TO
ONE OF OUR
CONSULTANTS**

