



FOR STARTERS



GUIDE PRICE
£450,000

MAIN COURSE

A charming 2 double bedroom semi-detached property with a driveway, ideally located in a very desirable area, within easy walking distance of Stratford-upon-Avon town centre. Perfectly combining comfort and practicality, this home offers spacious living areas and modern features, making it an ideal choice for both first-time buyers and families. The property boasts two generously sized double bedrooms, with the master bedroom benefiting from a spacious walk-in wardrobe, providing ample storage space.

The heart of the home is the fabulous kitchen/diner/family room, offering a stylish and functional space for cooking, dining, and family time. The open-plan design creates a bright and airy atmosphere, perfect for entertaining. In addition, the property includes a dedicated study, ideal for working from home or as a quiet retreat, and a utility room/downstairs shower room, to help keep the rest of the house clutter-free. The lounge with bay windows offers a welcoming area with plenty of natural light.

The south-facing rear garden provides a wonderful outdoor space, perfect for enjoying sunny afternoons and evenings, while the lounge with bay windows offers a welcoming area with plenty of natural light. Driveway parking is available, providing off-road parking for two vehicles, adding convenience and security.

Offered for sale with No Chain, this well presented property offers a fantastic opportunity for those looking for a well-located home with



both charm and functionality. The property's proximity to Stratford-upon-Avon town centre ensures excellent access to local amenities, schools, and transport links. Viewing is highly recommended to fully appreciate all the features this lovely home has to offer.



KEY INGREDIENTS



Tenure
Freehold



Council Tax
Band - D



EPC
Band - D



South Facing Rear
Garden



Mains Gas, Electric,
Water & Drainage

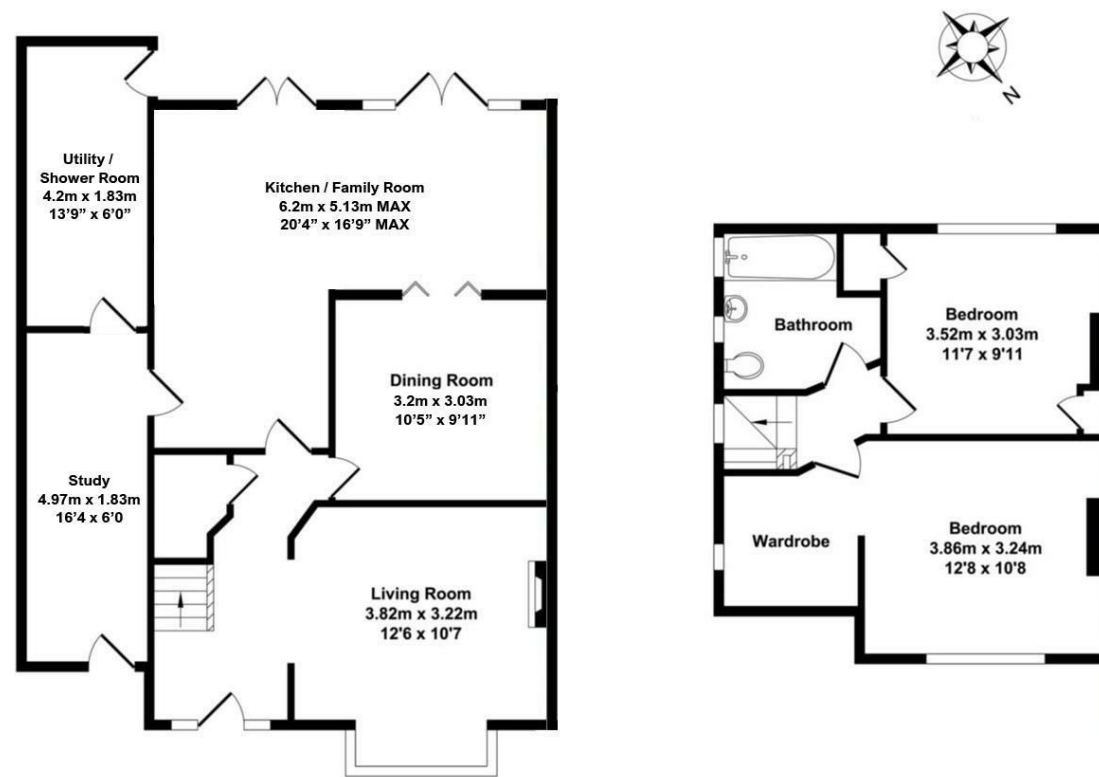


Heating System
Gas Central Heating



Stratford Primary
School

WHY NOT TAKE
A LOOK INSIDE?
GIVE US A CALL
01789 414222



All measurements are approximate, not to scale, for illustrative purpose only.

**FOR MORE INFO AND
TO SEE OUR OTHER
LOVELY PROPERTIES
CHECK OUT OUR WEBSITE**

MOVEWITHEDWARDS.CO.UK

**HAVE YOU GOT
A PROPERTY
TO SELL?
WE'D LOVE TO
HAVE A CHAT
01789 414222**

**DID YOU KNOW WE ALSO
DO MORTGAGES.
FOR FREE ADVICE
SPEAK TO
ONE OF OUR
CONSULTANTS**

