



FOR STARTERS



PCM
£995 PCM

MAIN COURSE

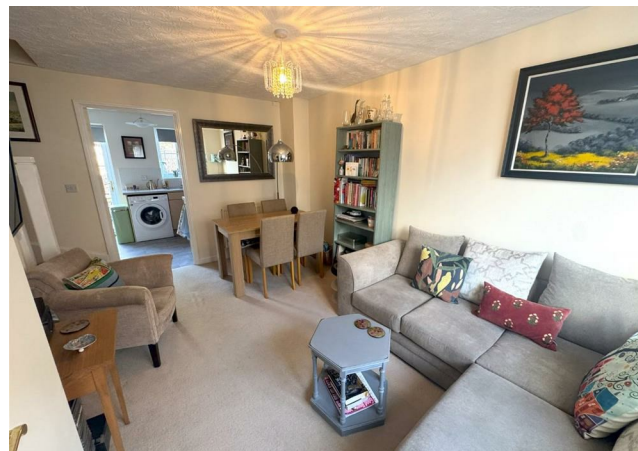
A well-presented two-bedroom home located on the ever-popular Trinity Mead development, just south of the river in Stratford-upon-Avon.

The accommodation comprises an entrance hallway with a downstairs cloakroom, leading into a bright and welcoming living room at the front of the house. To the rear, the kitchen/breakfast room is fitted with a range of units, integrated appliances, and space for a small table. French doors open directly onto the garden, making it a great space for everyday dining or entertaining.

Upstairs, there are two good-sized double bedrooms. The main bedroom benefits from twin fitted wardrobes, offering ample storage, while the second bedroom also comfortably fits a double bed. The family bathroom is finished with a white suite and includes a shower over the bath.

Outside, the rear garden is fully enclosed and mainly laid to lawn with a paved seating area - ideal for enjoying the warmer months. The property also comes with allocated parking to the rear.

Sorry no pets
Available start of May



LOCATION

Please see Tenancy Information under the Lettings heading on the toolbar on our website.

KEY INGREDIENTS



Tenure



Council Tax
Band - C



EPC
Band - B



TBC

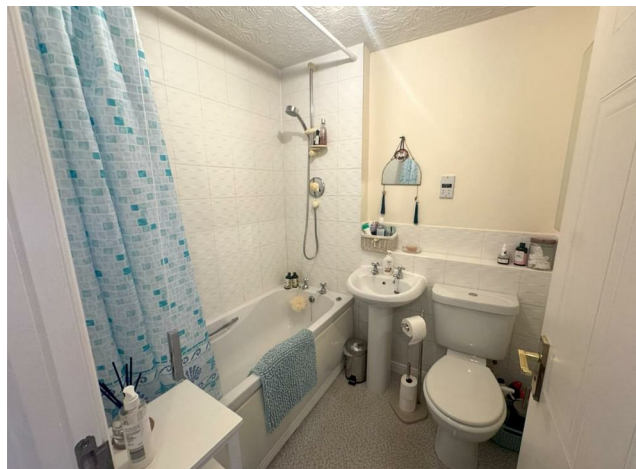


Heating system
TBC



TBC

WHY NOT TAKE
A LOOK INSIDE?
GIVE US A CALL
01789 414222



**FOR MORE INFO AND
TO SEE OUR OTHER
LOVELY PROPERTIES
CHECK OUT OUR WEBSITE**

MOVEWITHEDWARDS.CO.UK

**HAVE YOU GOT
A PROPERTY
TO SELL?
WE'D LOVE TO
HAVE A CHAT
01789 414222**

**DID YOU KNOW WE ALSO
DO MORTGAGES.
FOR FREE ADVICE
SPEAK TO
ONE OF OUR
CONSULTANTS**

