



## KEY FEATURES

TWO BEDROOMS - TWO BATHROOMS - OPEN PLAN LIVING - PRIVATE COURTYARD GARDEN - AMPLE PARKING - GRADE II BARN CONVERSION

The Farrow at the historic Boddington Farm site is lovely two bedroom barn conversion with gardens and courtyards on all three boundaries and uninterrupted views over the fields to the rear of the site. Named after the buildings original use on the working farm the property has been carefully restored and extended.

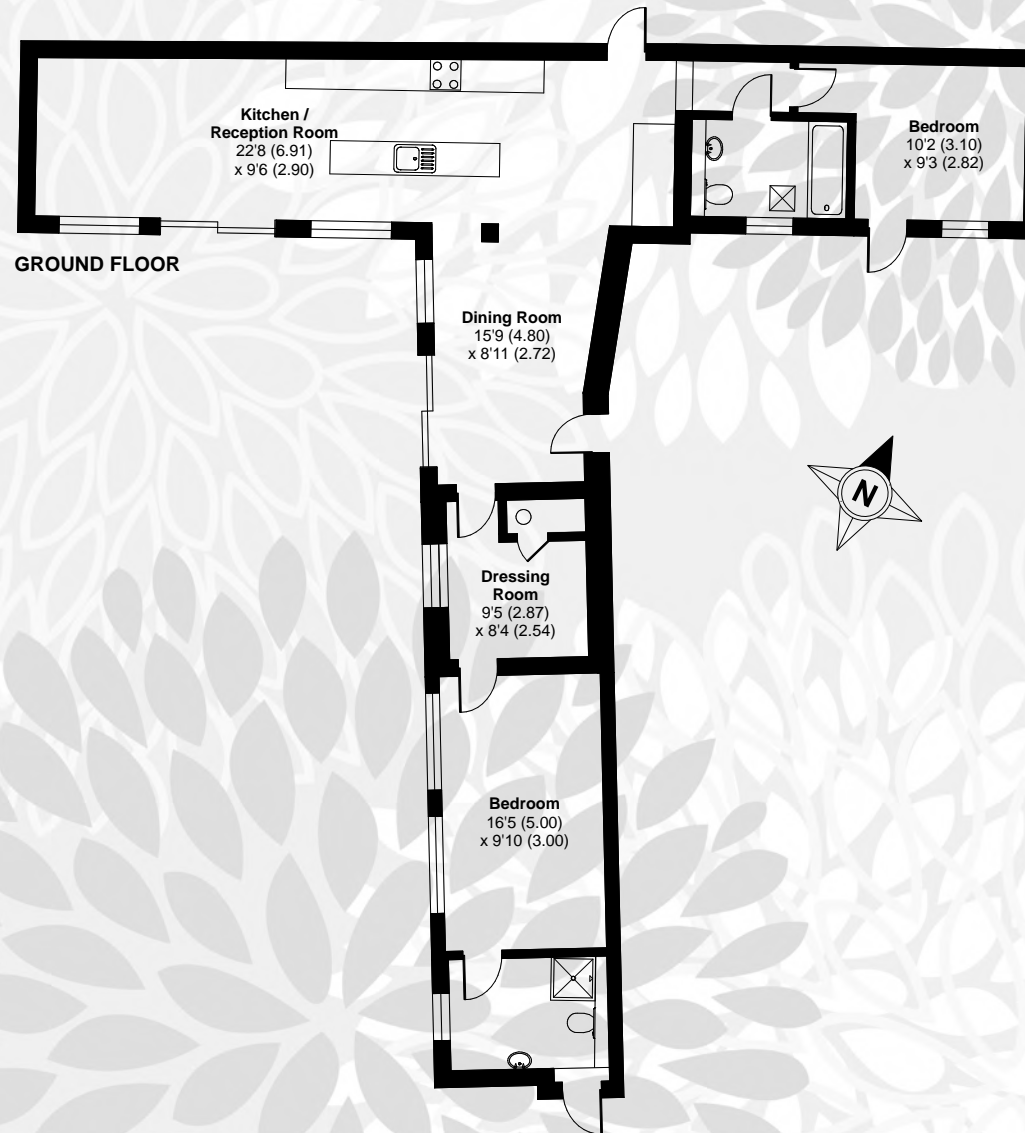
Arranged over a single floor this attractive pied du terre comprises open plan living, kitchen and dining overlooking the private courtyard garden through large glazed screens along two sides of the building. The two bedrooms provide spacious sleeping quarters with a large dressing room and en-suite to the master bedroom. A family bathroom, further garden and ample parking completes the accommodation.

ACCUEIL



## THE FARMSTEAD, LUDDINGTON, WARWICKSHIRE - THE FARROW - TWO BEDROOM HOME

APPROXIMATE GROSS INTERNAL FLOOR AREA 1076 SQFT / 100 SQM



In accordance with the Property Mis-description Act 1991, the following details have been prepared in good faith, they are not intended to constitute part of an offer of contract. Any information contained herein (whether in text, floorplans, computer generated images (CGIs) or photographs) is given in good faith but should not be relied upon as being a statement of representation of fact. Any measurements of distances or dimensions referred to herein are approximate only. CGIs are intended for illustrative purposes only to demonstrate quality and style of the specification and should be treated as general guidance only. The specification is the anticipated specification but may be subject to change as necessary and without notice. Any photographs may not represent the actual fittings and furnishings at the development and may show upgrades subject to an additional cost. Specification is not intended to form part of any contract or warranty unless specifically incorporated in writing into the contract.

Issue 1: 12/04/2019

For more information about this development please contact

Georgina McGorrigan from Edwards Estate Agents

01789 414222 or by email at [georgina@movewithedwards.co.uk](mailto:georgina@movewithedwards.co.uk)