



FOR STARTERS



OFFERS IN EXCESS OF
£125,000

MAIN COURSE

Charming Edwardian Apartment in a Prime Stratford-upon-Avon Location

Situated in one of Stratford-upon-Avon's most sought-after areas, this first-floor one-bedroom apartment offers a fantastic opportunity to live in a beautiful Edwardian building within easy walking distance of the town centre.

The apartment features a bright and well-proportioned open-plan lounge, dining, and kitchen space, providing plenty of room for comfortable seating and a dining table. The kitchen is well-equipped with integrated appliances, including an oven, hob, dishwasher, washing machine, and fridge, making it a practical and stylish space.

Double doors lead from the living area into the bedroom, which would best accommodate a three-quarter or single bed. Off the bedroom, you'll find the bathroom, fitted with a bath and shower over, offering both convenience and comfort.

Externally, the property benefits from off road communal parking and access to a communal front garden with a drying area.

Offered for sale with no onward chain, this home is perfect for those seeking a characterful property in a prime location with all the conveniences of town living just a short stroll away.

There are 140 years remaining on the lease for this property.



KEY INGREDIENTS



Tenure
Leasehold



Council Tax
Band - A



EPC
Band - D



N/A



Mains Electric,
Water & Drainage



Heating System
Electric Storage Heaters



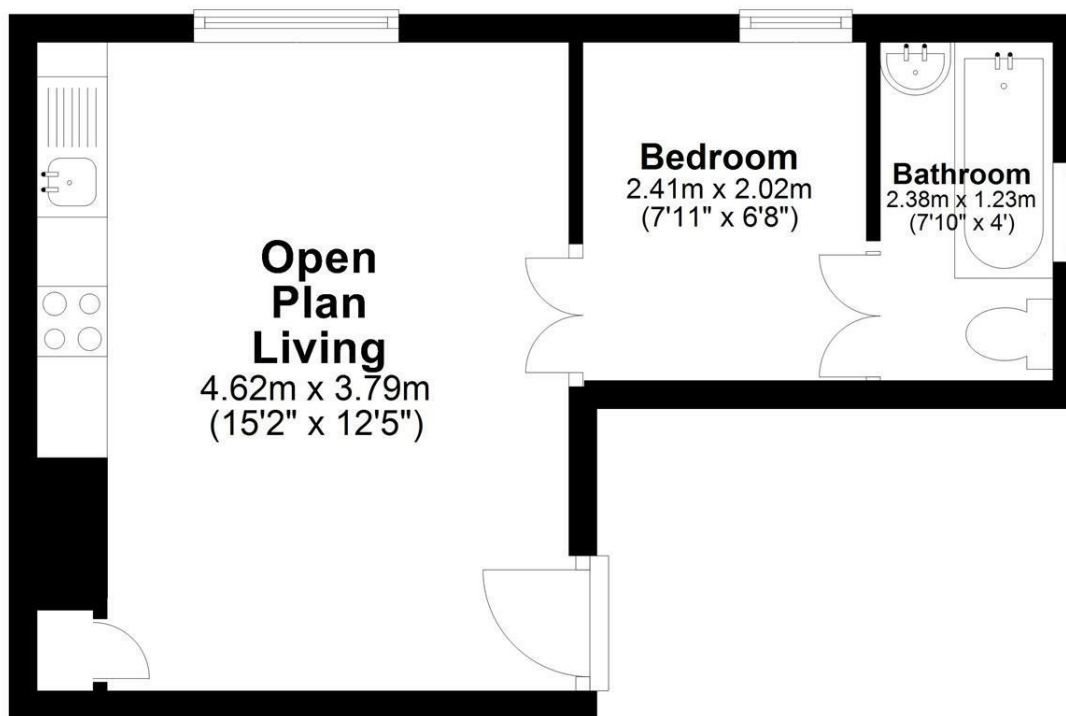
Thomas Jolyffe
Primary

WHY NOT TAKE
A LOOK INSIDE?
GIVE US A CALL
01789 414222



First Floor Apartment

Approx. 25.8 sq. metres (277.6 sq. feet)



Total area: approx. 25.8 sq. metres (277.6 sq. feet)

**FOR MORE INFO AND
TO SEE OUR OTHER
LOVELY PROPERTIES
CHECK OUT OUR WEBSITE**

MOVEWITHEDWARDS.CO.UK

**HAVE YOU GOT
A PROPERTY
TO SELL?
WE'D LOVE TO
HAVE A CHAT
01789 414222**

**DID YOU KNOW WE ALSO
DO MORTGAGES.
FOR FREE ADVICE
SPEAK TO
ONE OF OUR
CONSULTANTS**

