



FOR STARTERS



OFFERS IN EXCESS OF
£375,000

MAIN COURSE

Are you searching for a beautifully presented home that's easy to maintain, has a sunny garden, and is tucked away in a quiet spot south of the river? If spacious bedrooms and convenient parking are on your wish list, this could be the perfect home for you.

This semi-detached home is positioned on the edge of a popular development in a peaceful cul-de-sac, offering a sense of privacy while still being within easy reach of local amenities. Key features include a south-east facing garden that isn't directly overlooked, a garage with power and light, and a driveway that comfortably fits two cars nose to tail—ideal for hassle-free parking and unloading.

Ground Floor

Stepping inside, you're welcomed by an inviting entrance hall that sets the tone for the rest of the home. To the left, a stylish cloakroom provides a convenient space for guests and families alike. Further along, the kitchen is a practical and well-planned space with room for all main appliances, making it both functional and easy to work in.

At the rear of the property, the sitting/dining room is a bright and welcoming space, enhanced by a dual aspect that allows plenty of natural light to flow in. The side window has been enlarged to maximise the light, creating an airy feel. A feature fireplace acts as a charming focal point, while a useful storage cupboard provides a discreet place to keep things tidy. French doors open into the conservatory/dining room, which offers a lovely spot to enjoy the garden views while also providing easy access outside.

First Floor

Upstairs, you'll find two excellent double bedrooms, both benefiting from built-in wardrobes for added storage. Between the bedrooms, a well-presented three-piece bathroom includes a window for natural light and ventilation, with a shower over the bath.

Top Floor - Master Suite

The top floor is where this home truly shines. The master suite is a stunning retreat, complete with a dedicated dressing area featuring built-in wardrobes and space for a dressing table. A skylight floods the room with natural light, creating a bright yet cosy atmosphere. The en-suite shower room is beautifully finished, complete with a large walk-in double shower, making it the perfect space to unwind after a long day.



Outside

The south-east facing garden is a real highlight, offering a wrap-around patio leading to a lawned area—a great space for relaxing or entertaining. Behind the garage, there's a generous area for a shed and discreet wheelie bin storage, keeping everything neat and out of sight. A side gate provides access to the driveway and garage, which benefits from power and lighting.

Set in a quiet part of the development on a no-through road, this home enjoys minimal passing traffic. From the front windows, you can see across to the left where a nearby footpath provides a shortcut towards town—ideal for a pleasant stroll or a quick walk to local amenities.

This is a fantastic opportunity to secure a stylish and well-maintained home in a sought-after location. If this sounds like the perfect fit for you, get in touch to arrange a viewing.

KEY INGREDIENTS



Tenure
Freehold



Council Tax
Band - E



EPC
Band - C



South East



All mains services
connected



Heating System
Mains Gas



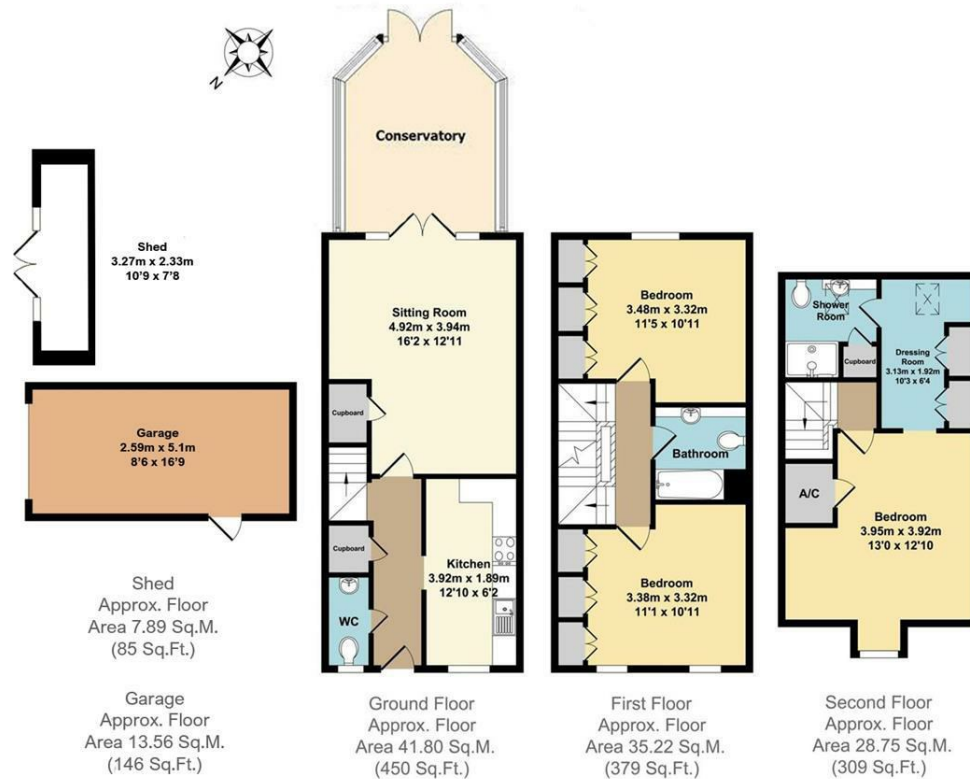
Bridgetown
Primary

WHY NOT TAKE
A LOOK INSIDE?
GIVE US A CALL
01789 414222



Chesterton Drive
Total Approx. Floor Area 127.22 Sq.M. (1369 Sq.Ft.)

Whilst every attempt has been made to ensure the accuracy of the floor plan contained here, measurements of doors, windows, rooms and any other items are approximate and no responsibility is taken for any error, omission, or mis-statement. This plan is for illustrative purposes only and should be used as such by any prospective purchaser. The services systems and appliance shown have not been tested and no guarantee as to their operability or efficiency can be given.



**FOR MORE INFO AND
TO SEE OUR OTHER
LOVELY PROPERTIES
CHECK OUT OUR WEBSITE**

MOVEWITHEDWARDS.CO.UK

**HAVE YOU GOT
A PROPERTY
TO SELL?
WE'D LOVE TO
HAVE A CHAT
01789 414222**

**DID YOU KNOW WE ALSO
DO MORTGAGES.
FOR FREE ADVICE
SPEAK TO
ONE OF OUR
CONSULTANTS**

