



FOR STARTERS



OFFERS OVER
£180,000

MAIN COURSE

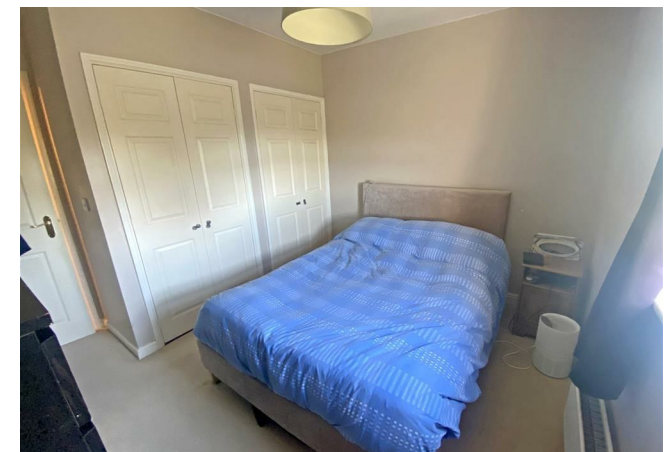
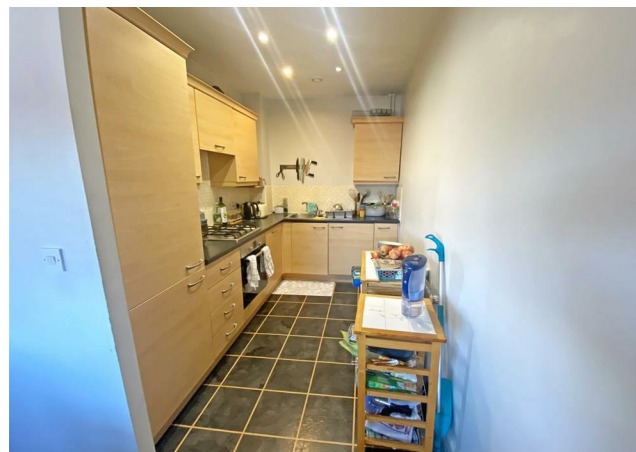
This third floor penthouse apartment offers a perfect blend of contemporary style and functional living space. Located in a sought-after neighbourhood, this property boasts a range of desirable features including a main bathroom, two double bedrooms (one with en-suite) and a dedicated parking space.

As you step into the apartment, you are greeted by a welcoming entrance hall. The spacious living area provides an ideal setting for relaxation and entertainment. The open-plan layout seamlessly connects the living area to the dining space & kitchen, creating a perfect environment for hosting guests or enjoying family meals.

Across the hallway from the open plan living space you'll find the two double bedrooms, each providing a comfortable and private retreat. The master bedroom boasts an en-suite bathroom, with excellent built in storage adding an extra touch of luxury and convenience. The en-suite is equipped with modern fixtures including shower, sink and WC.

The second double bedroom is equally impressive, featuring ample space and also benefitting from built in storage. This bedroom offers versatility and can easily be transformed into a home office, study or guest room, depending on your needs.

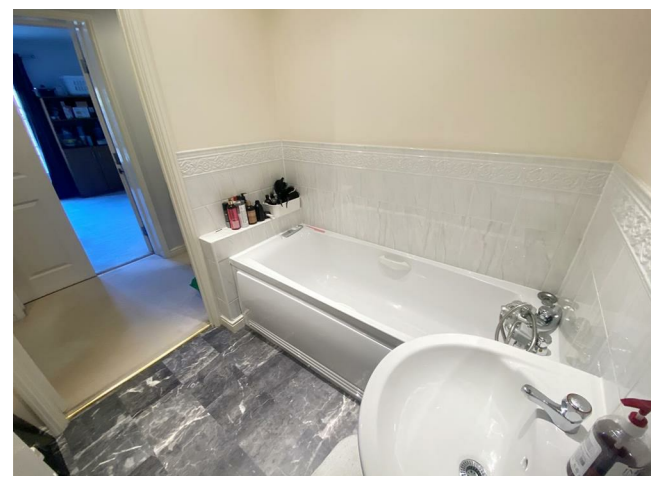
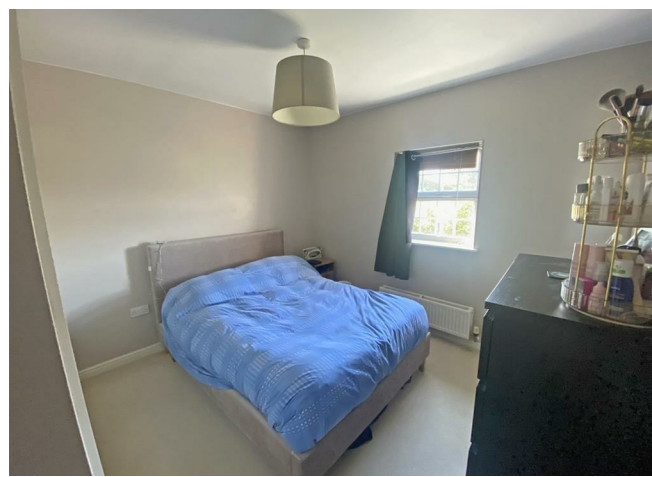
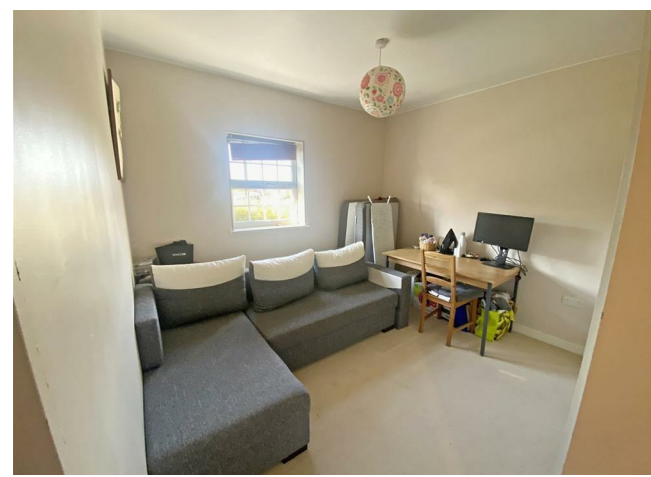
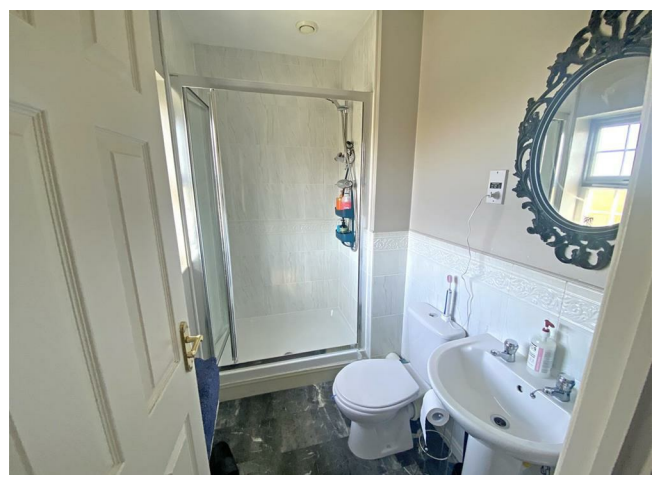
The main bathroom situated off the hallway serves the second bedroom and guests.



With a dedicated parking space, you'll never have to worry about finding parking.

In summary, this tasteful apartment offers a modern, stylish and comfortable living experience, presenting an excellent opportunity to embrace a contemporary lifestyle in a desirable location.

The apartment is leasehold and expires 2129.



KEY INGREDIENTS



Tenure
Leasehold



Council Tax
Band - C



EPC
Band -



N/A



All mains services
connected

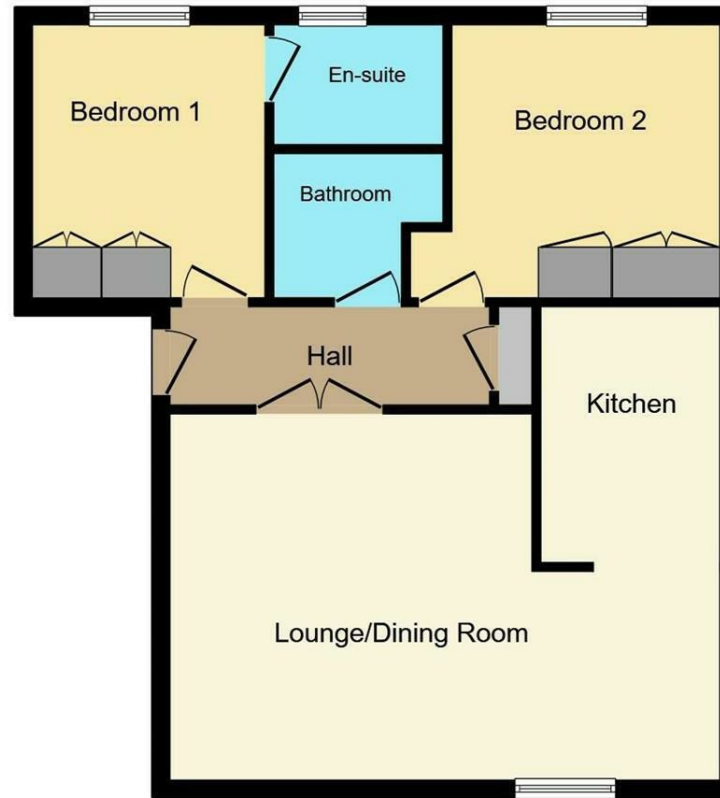


Heating System
Gas



Thomas Jolyffe
Primary

WHY NOT TAKE
A LOOK INSIDE?
GIVE US A CALL
01789 414222



Floor Plan

FOR IDENTIFICATION PURPOSES ONLY

This Floor Plan is for illustration purposes only and may not be representative of the property. The position and size of doors, windows and other features are approximate. Unauthorized reproduction prohibited. © PropertyBOX

**FOR MORE INFO AND
TO SEE OUR OTHER
LOVELY PROPERTIES
CHECK OUT OUR WEBSITE**

MOVEWITHEDWARDS.CO.UK

**HAVE YOU GOT
A PROPERTY
TO SELL?
WE'D LOVE TO
HAVE A CHAT
01789 414222**

**DID YOU KNOW WE ALSO
DO MORTGAGES.
FOR FREE ADVICE
SPEAK TO
ONE OF OUR
CONSULTANTS**

