





# FOR STARTERS



OFFERS IN EXCESS OF  
£325,000

## MAIN COURSE

Welcome to this delightful 3-bedroom semi-detached property, perfectly situated in a sought-after neighbourhood, offering both convenience and comfort. This home is ideal for families, first-time buyers, and investors alike, given its prime location within walking distance to excellent schools and local amenities. The property boasts three good sized bedrooms, off street parking, and an impressive sized garden.

Stepping inside the hall way meets you, with a WC conveniently located to your right, with stairs going up. To the left of the hall is the kitchen with a window overlooking the front featuring ample cabinetry and sleek countertops.

Continuing along the hall you are greeted with a welcoming and generously sized living room, featuring a large window and french doors onto the garden, that allow ample natural light to flood the space, creating a warm and inviting atmosphere. The room is perfect for relaxing with family or entertaining guests.

The property boasts three well-proportioned bedrooms, each designed with comfort in mind. The spacious layout allows for flexibility, whether you need extra space for a home office, guest room, or children's room. A bonus to this home is the spacious master bedroom with a sleek ensuite bathroom, adding to the ease and convenience of what this property has to offer.





Additional highlights include off-street parking for multiple vehicles, ensuring convenience and peace of mind. With excellent transport links, local amenities, and schools nearby, this home offers everything you need for modern family living. Don't miss this opportunity to make it your own!




## KEY INGREDIENTS


 Tenure  
Freehold

 Council Tax  
Band - D

 EPC  
Band - B

 North Facing

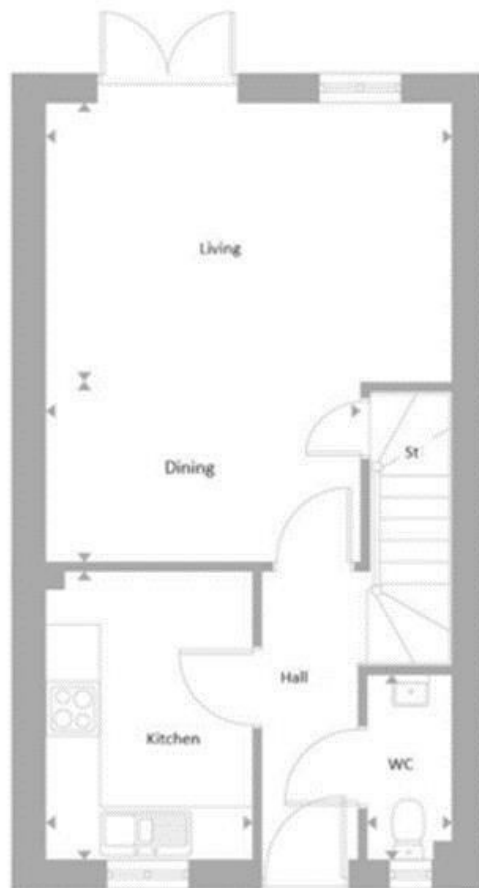
 Mains Electric,  
Water, Drainage

 Gas Combi Boiler

  
Bishopton Primary  
Stratford High

WHY NOT TAKE  
A LOOK INSIDE?  
GIVE US A CALL  
01789 414222





**FOR MORE INFO AND  
TO SEE OUR OTHER  
LOVELY PROPERTIES  
CHECK OUT OUR WEBSITE**

**[MOVEWITHEDWARDS.CO.UK](http://MOVEWITHEDWARDS.CO.UK)**

**HAVE YOU GOT  
A PROPERTY  
TO SELL?  
WE'D LOVE TO  
HAVE A CHAT  
01789 414222**

**DID YOU KNOW WE ALSO  
DO MORTGAGES.  
FOR FREE ADVICE  
SPEAK TO  
ONE OF OUR  
CONSULTANTS**

