



FOR STARTERS



OFFERS IN EXCESS OF
£120,000

MAIN COURSE

Nestled in the vibrant heart of Stratford-upon-Avon, this charming 1-bedroom apartment offers a delightful retreat in one of England's most iconic towns. Situated right in the centre of the bustling streets, this apartment provides easy access to an array of shops, restaurants, cafes, and cultural attractions, ensuring that everything you need is right on your doorstep.

Situated right in the centre of the bustling streets, this apartment provides easy access to an array of shops, restaurants, cafes, and cultural attractions, ensuring that everything you need is just steps away.

Upon entering the apartment, you are welcomed into a cozy living room, the perfect space to unwind after a day of exploring the town. The living room offers a comfortable seating area where you can relax with a good book or catch up on your favourite TV shows.

The well-equipped kitchen provides everything you need to prepare home-cooked meals during your stay. Whether you're whipping up a quick breakfast before heading out for the day or enjoying a leisurely dinner at home, the kitchen offers modern appliances and ample counter space to make cooking a breeze.

With its central location, this apartment is the perfect base for exploring all that Stratford-upon-Avon has to offer. From world-renowned Shakespearean landmarks to picturesque riverside walks, you'll find endless opportunities for adventure and discovery right at



your doorstep.
 In summary, this 1-bedroom apartment offers a cozy and convenient retreat in the heart of Stratford-upon-Avon. Whether you're visiting for business or pleasure, its central location and comfortable amenities make it the perfect place to call home during your stay in this historic town. It could also serve as an excellent investment property and is currently tenanted.

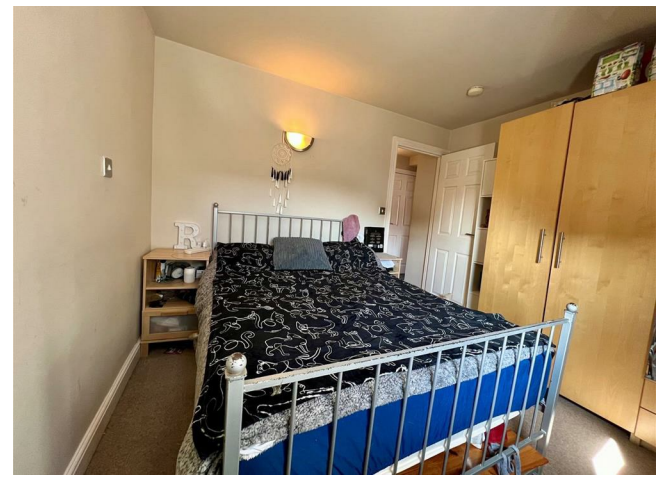
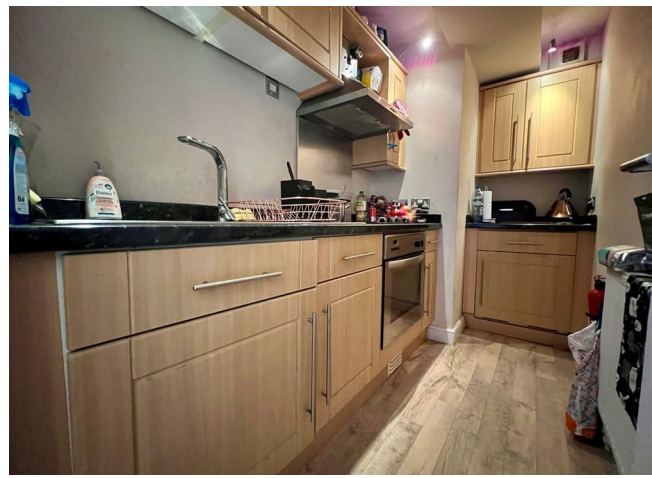
KEY INGREDIENTS

-  Tenure
Leasehold
-  Council Tax
Band -
-  EPC
Band - C
-  TBC
-  Mains Services
-  Heating System
TBC



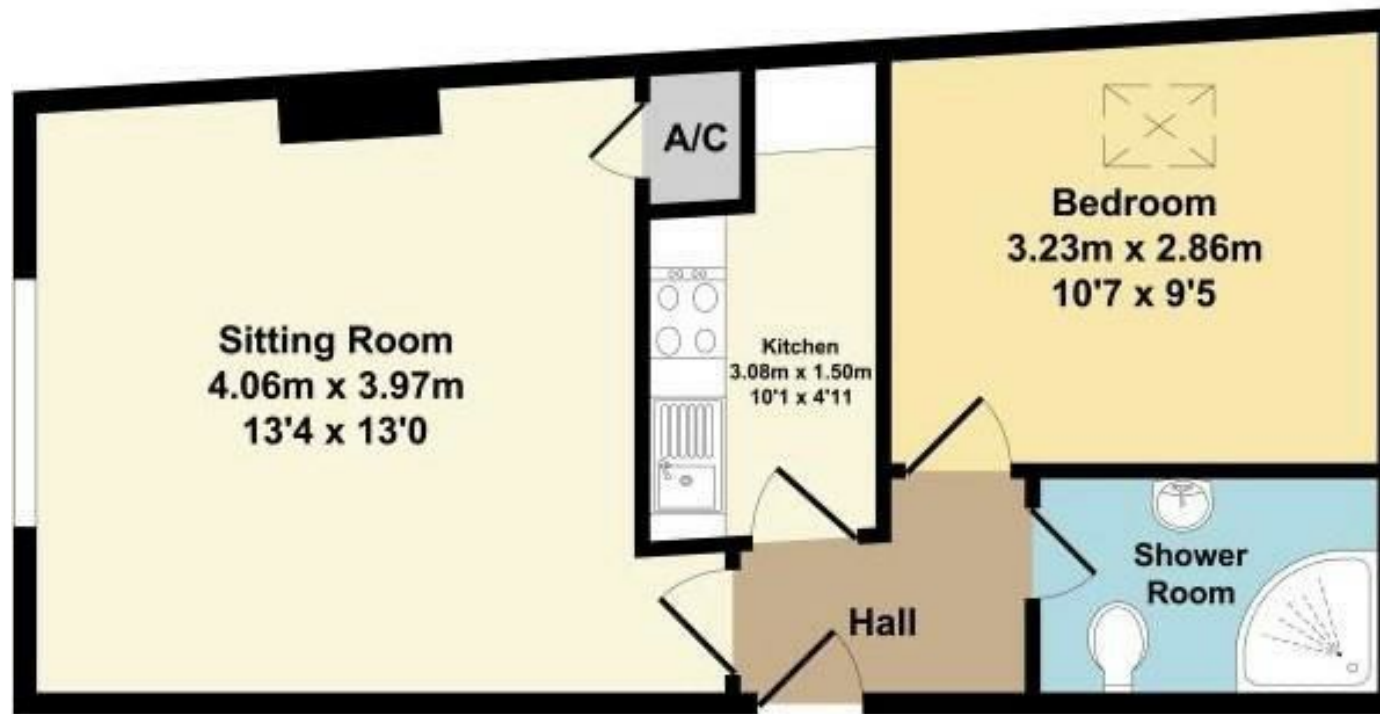
TBC

WHY NOT TAKE
 A LOOK INSIDE?
 GIVE US A CALL
 01789 414222



Total Approx. Floor Area 36.57 Sq.M. (394 Sq.Ft.)

Whilst every attempt has been made to ensure the accuracy of the floor plan contained here, measurements of doors, windows, rooms and any other items are approximate and no responsibility is taken for any error, omission, or mis-statement. This plan is for illustrative purposes only and should be used as such by any prospective purchaser. The services systems and appliance shown have not been tested and no guarantee as to their operability or efficiency can be given.



**FOR MORE INFO AND
TO SEE OUR OTHER
LOVELY PROPERTIES
CHECK OUT OUR WEBSITE**

MOVEWITHEDWARDS.CO.UK

**HAVE YOU GOT
A PROPERTY
TO SELL?
WE'D LOVE TO
HAVE A CHAT
01789 414222**

**DID YOU KNOW WE ALSO
DO MORTGAGES.
FOR FREE ADVICE
SPEAK TO
ONE OF OUR
CONSULTANTS**

